



# Environmental Septic Tank systems



an *Aliaxis* company

RX PLASTICS LTD  
PO Box 360 Ashburton  
Phone +64 3 307 9081  
Email [sales@rxplastics.co.nz](mailto:sales@rxplastics.co.nz)  
[www.rxplastics.co.nz](http://www.rxplastics.co.nz)





Whether you are storing, transporting or distributing water or wastewater, RX Plastics has the solution for you, with manufacturing facilities New Zealand wide and selections of strong supporting brands, RX Plastics can assist, whatever your requirements.

## What is AirTech™?

The AirTech™ system is an efficient sewage treatment plant that safely and effectively processes all household sewage and wastewater and recycles it as clear, odourless, nutrient enriched water to irrigate landscape, shelterbelt, coppice wood lots or existing planted areas.

For the environmentally minded this means that the sewage and wastewater is treated on the property where it is produced and then recycled for reuse with little or no environmental impact on the land.

## We've got what you need

**RX Plastics has a wide range of products to support your water and wastewater distribution.**

### Tanks

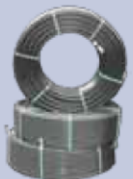
RX has tanks from 135 litre – 33,000 litre. Whatever your requirements RX has it.

### Farm Troughs

RX has troughs from 12L – 1200L to suit your animals water requirements.

### Polyethylene Pipe (Polypipe) and PVC Pipe

RX has a range from 15mm – 450mm to suit many tanks. Pipe is rated 5bar (72 psi) – 25bar (375psi).



## Why choose AirTech™?

The AirTech™ efficiently treats all your household sewage and wastewater, recycles it, allowing you to irrigate your property. The AirTech™ system is suitable for even the most ecologically sensitive areas.

### Choose from two sizes:

#### AirTech™ 7000

Ideal for houses and batches up to 4 bedrooms

#### AirTech™ 9000

Ideal for houses of up to 8 bedrooms.

#### AirTech™ 9000 NR (Nitrogen Removal)

Ideal for houses of up to 8 bedrooms.

Suitable for ecologically sensitive areas including lake front properties and homes close to waterways.

All AirTech™ tanks are installed by RX Plastics approved and certified installers.

## Domestic benefits

### Benefits to you:

- No odour
- Low running costs
- Ability to irrigate landscaped gardens
- More flexible in the ground than concrete
- Easy to use alarm system for self monitoring

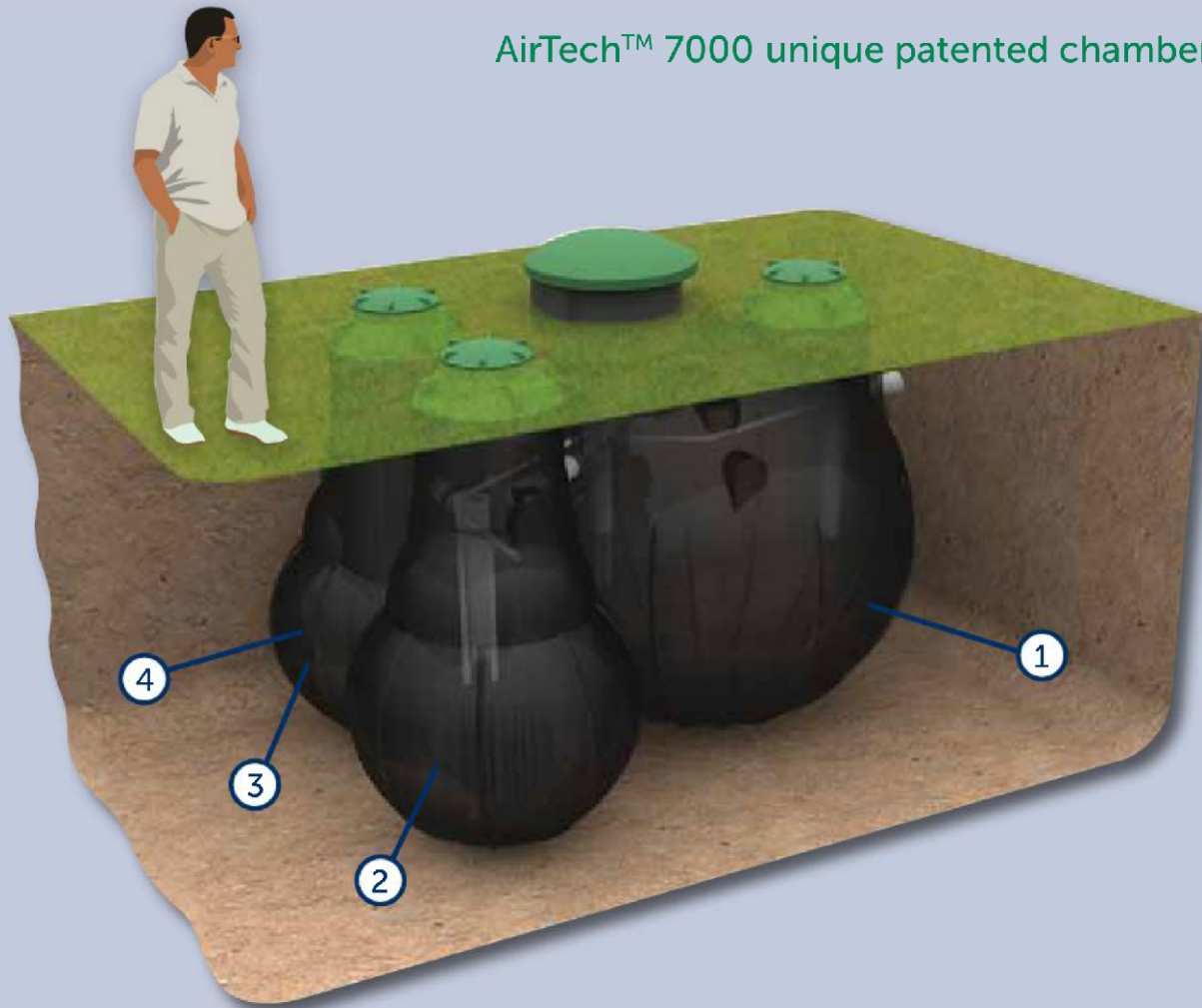
## Environmental benefits

### Benefits to the environment:

- Recycling wastewater into nutrient enriched water
- Little or no environmental impact on the land
- Ability to reuse water for irrigating surrounding land
- OSET trial results (low nitrate levels)
- High degree of breakdown achieved by the system



## AirTech™ 7000 unique patented chamber system



### ① Primary septic chamber

This is the main chamber where all household sewage and wastewater is discharged and the settling out of up to 95% of solid waste occurs. There is also a reduction in the biochemical oxygen demand (bod<sup>5</sup>) of up to 40%.

The primary chamber has a large liquid working capacity ensuring maximum retention time allowing anaerobic digestion of the accumulated solid waste. The primary chamber is a sealed chamber making sure there is no crossflow contamination between the separate treatment processes within the system. The outlet is fitted with an industry proven 3mm biofilter minimising solid waste carry-over integrating a flow modulation baffle to manage peak flow levels limiting shock loading of the system.

### ② Aeration chamber

The partially treated wastewater flows into the aeration chamber where aggressive digesting aerobic bacteria further reduce the suspended solid sludge. Efficient oxygen transfer through fine air diffusion maintains high aerobic activity

and population. Increased surface area through additional submerged media enhances and accommodates a greater growth of bacteria.

### ③ Clarification chamber

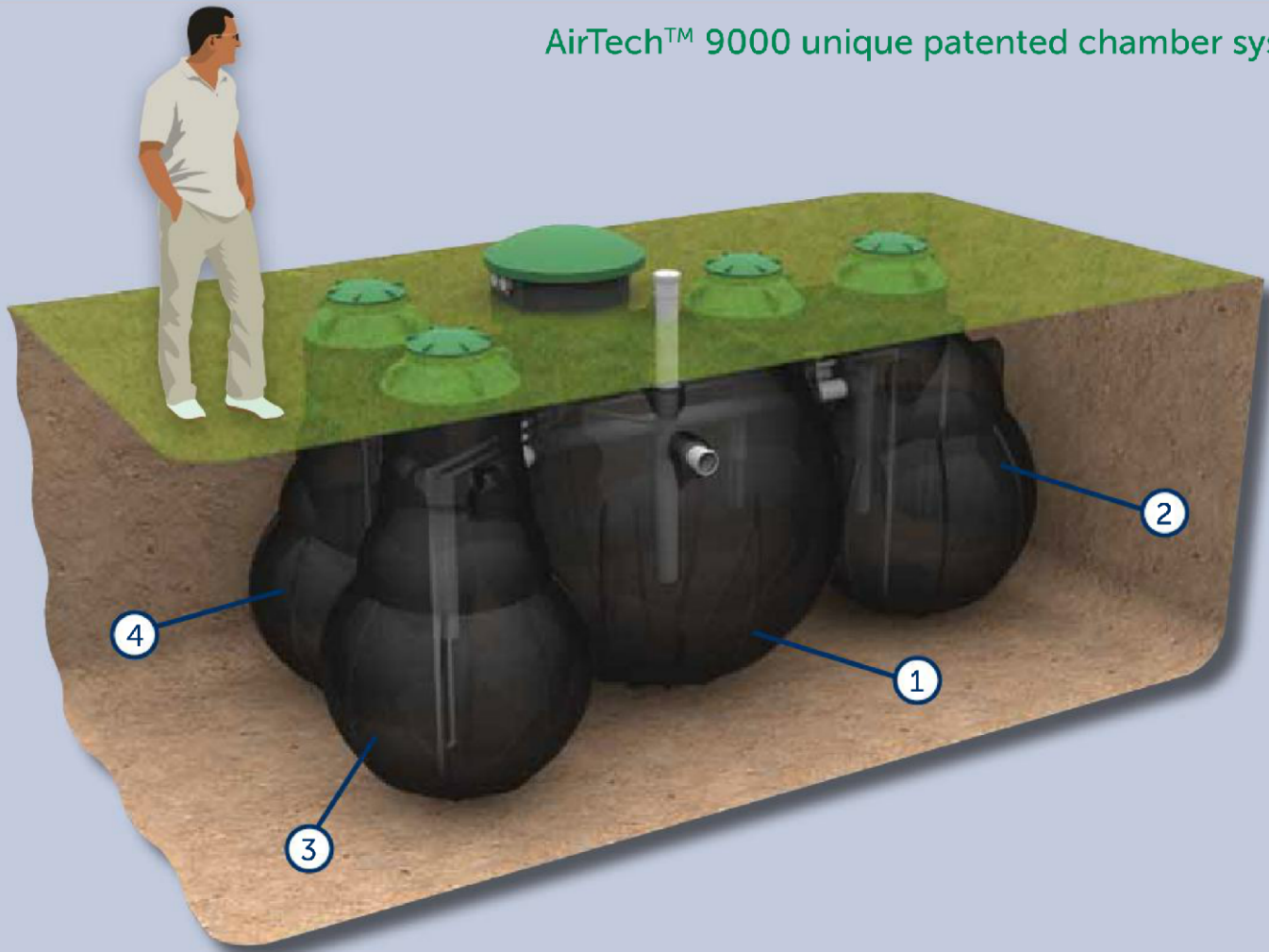
Wastewater effluent is gravity fed into the clarification chamber where, in quiescent conditions, any remaining sludge and suspended material settle and are returned to the primary chamber through a venturi airlift manifold. This continual flow of enhanced activated sludge ensures a healthy treatment plant in periods of low or zero flow to the system.

### ④ Irrigation pump chamber

The gravity flow of clean, clear odourless effluent into the irrigation pump chamber is nutrient enriched and is recycled through a designed irrigation system to enhance landscape, shelter belt or coppice tree woodlots on your property.

This chamber is protected with an alarm that will activate in the unlikely event of a pump failure, and has a large capacity for effluent storage.

## AirTech™ 9000 unique patented chamber system



## Controller alarm communication management system



The AirTech™ alarm provides information so you can ensure the AirTech™ is functioning properly and when it is in need of servicing

### Controller and alarm plate

- Automatic 24 hour self setting facility
- Battery back up
- 24 hour alarm
- Optional 24 hour monitoring
- Optional online maintenance report
- Snooze alarm – with 24 hour re-occurring reminder alarm to ensure service is completed and your AirTech™ system is once again fully functioning



## Technical

**Tank construction – strongest grade polyethylene**

**Tank production – rotational moulding**

## Features

- 3mm bio filter fitted
- Integrated flow modulation baffle
- Control alarm panel system
- Battery alarm backup
- Mains fail alarm
- System fail alarm
- Online management system

## Electrical

- Irrigation pump .6kw
- Blower – LP100.11kw

## Warranty

The AirTech™ aerated wastewater treatment system is covered by the RX Plastics extended warranty and covers all polyethylene rotomoulded tanks to be free of defects in workmanship, and materials for a period of 15 years.

The manufacturers warranty apply to all other componentry used in the AirTech™ system.

## Servicing arrangements

**Your AirTech™ aerated waste water treatment system requires service and maintenance inspections every six months.**

This will be done by our trained independent service agents/installers.

Every six months they will phone you to arrange a suitable time to attend to your AirTech™ systems servicing needs, otherwise please make contact with them to arrange a time.

A record sheet (in triplicate) will be completed by our service agent at the time of service. One copy is for you the customer, another is sent off to your local council and the third copy will be retained for our records.

Please call your installer/service agent for servicing costs in your area. Servicing is usually carried out every six months, unless heavy usage occurs during holiday periods for example, then your system may need servicing sooner.

## Customer care

An AirTech™ aerated wastewater treatment system will provide you with many years of rewarding and reliable performance supported and serviced by our network of fully trained and certified installation and service technicians.

Our friendly expert technicians have extensive product and system knowledge and are able to provide you excellent support should you require. It's all part of our commitment to your total satisfaction and peace of mind.

## Irrigation effluent disposal system

### Irrigation lateral

- Internationally colour coded purple dripline identifying effluent application
- Integrated emitters set at specified spacings
- Pressure compensating emitters
- Automatic air relief valve
- Automatic MFV line flushing valve
- Proven effluent disposal system

### Super filter

- Patented disc filtration technology
- Irrigation lateral protection
- Industry proven ring disc filter
- Corrosion resistant
- Simple disc cleaning procedure